



Ministry of Forests, Lands  
and Natural Resource Operations

# **WFCA Annual Business and Market Summit FLNRORD Seedling Projections**

Brendan Brabender, Neil Hughes,  
Lorne Bedford

Resource Practices Branch

August 25, 2020

## PRESENTATION OUTLINE

1. Review the accuracy of my past predictions.
2. Provide refined long term projections from Select Seed, Forest Genetics Council.
3. Short term predictions 2020 and beyond
4. Government Programs : What's In the Future?



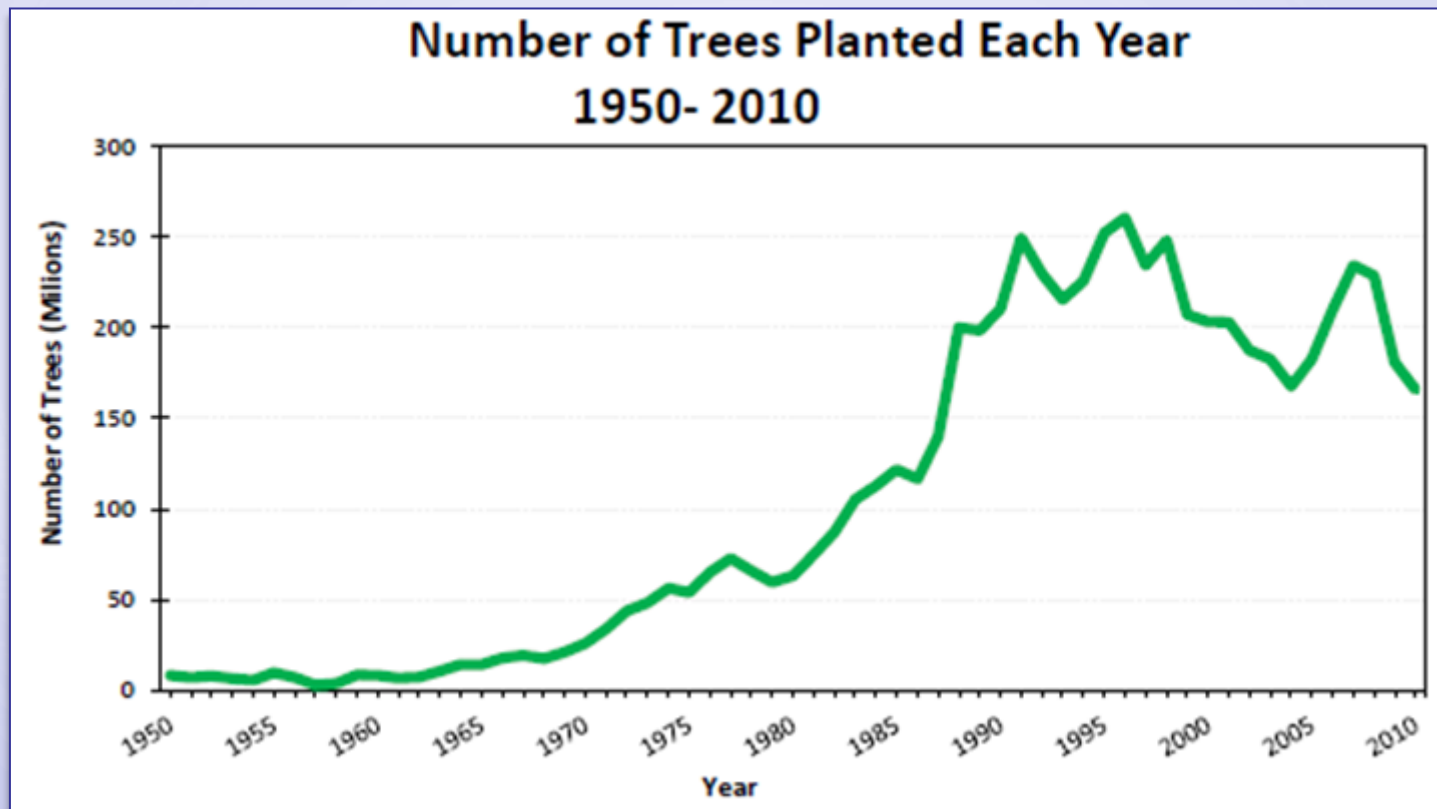
# Cultivating the Future: Innovations in Forestry

Lorne Bedford R.P.F.

Deputy Director

Resource Practices Branch

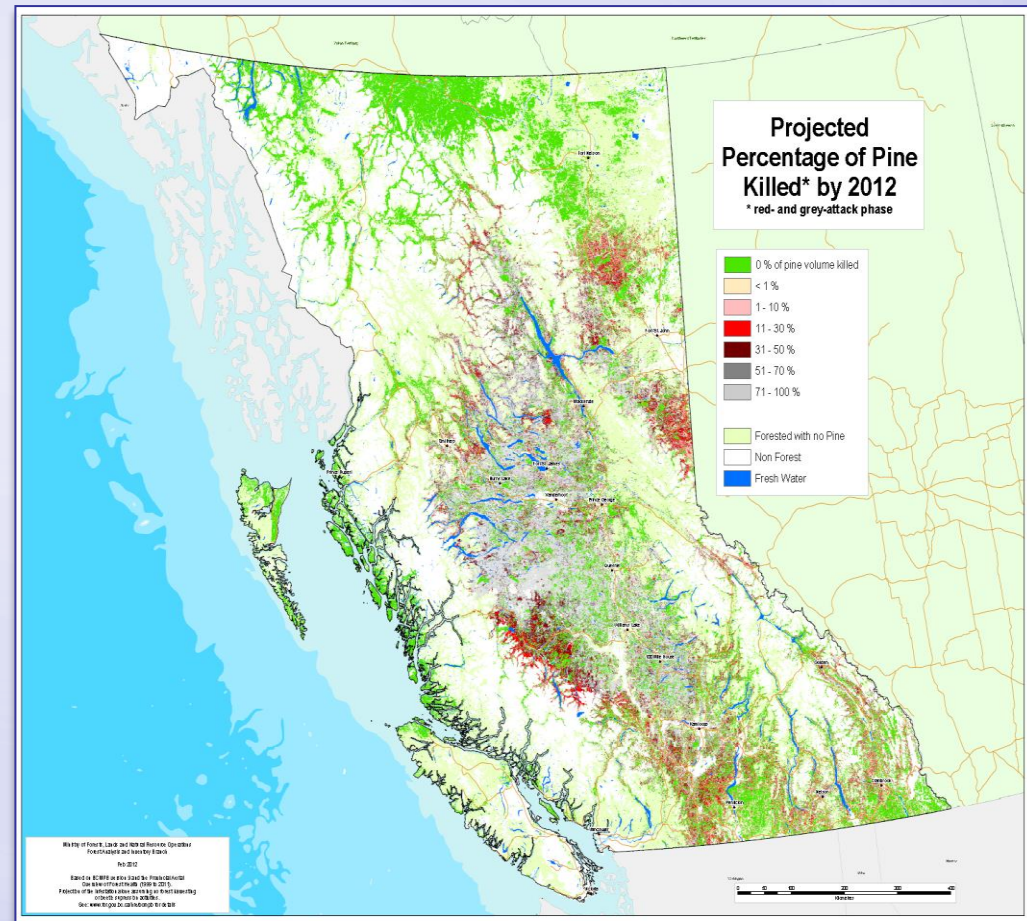
## Past Investments in Silviculture





## Future Opportunities - MPB impacts

The cumulative  
area impacted by  
MPB -18.1 Million  
hectares

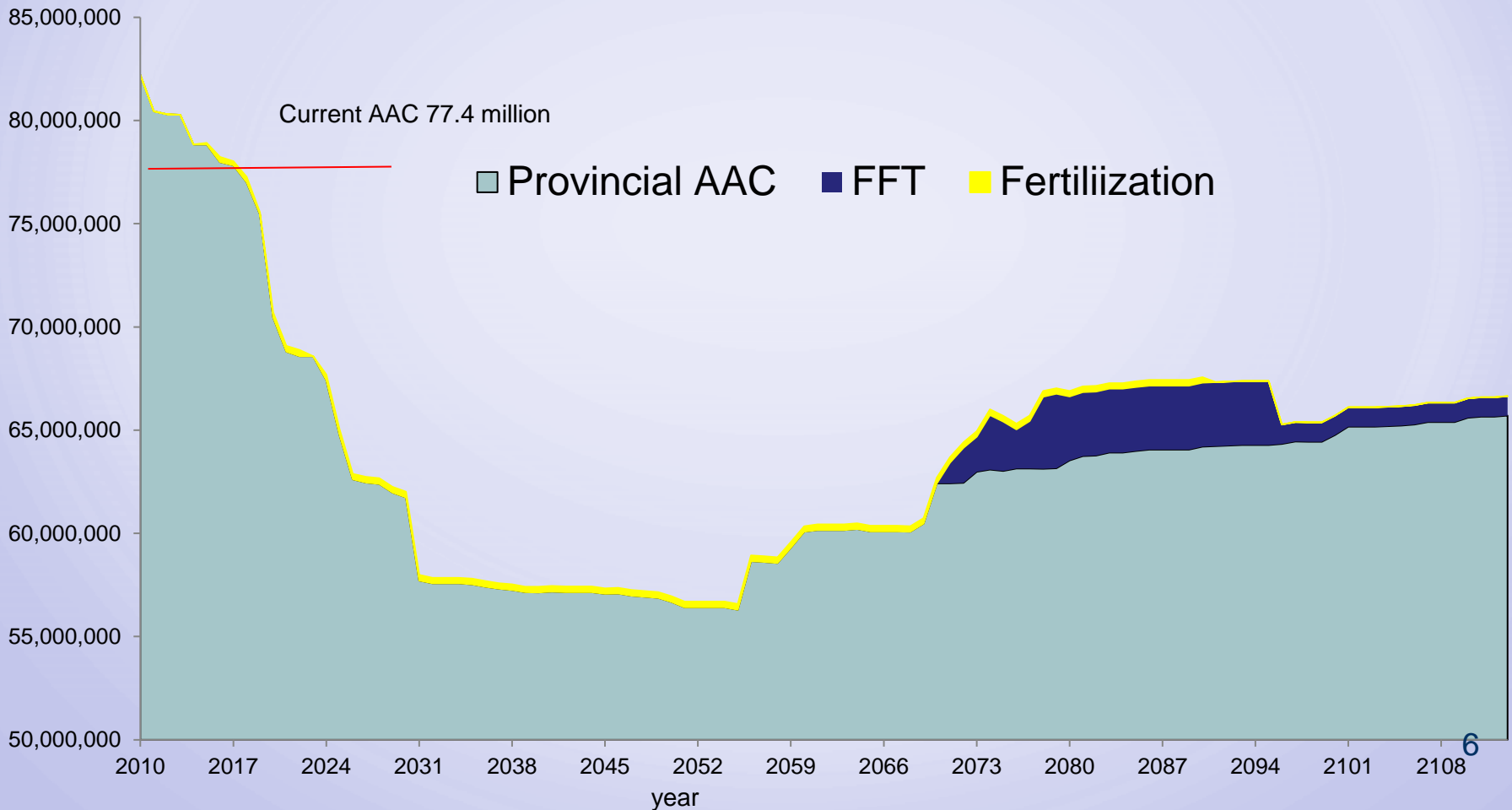




# Ministry of Forests, Lands and Natural Resource Operations

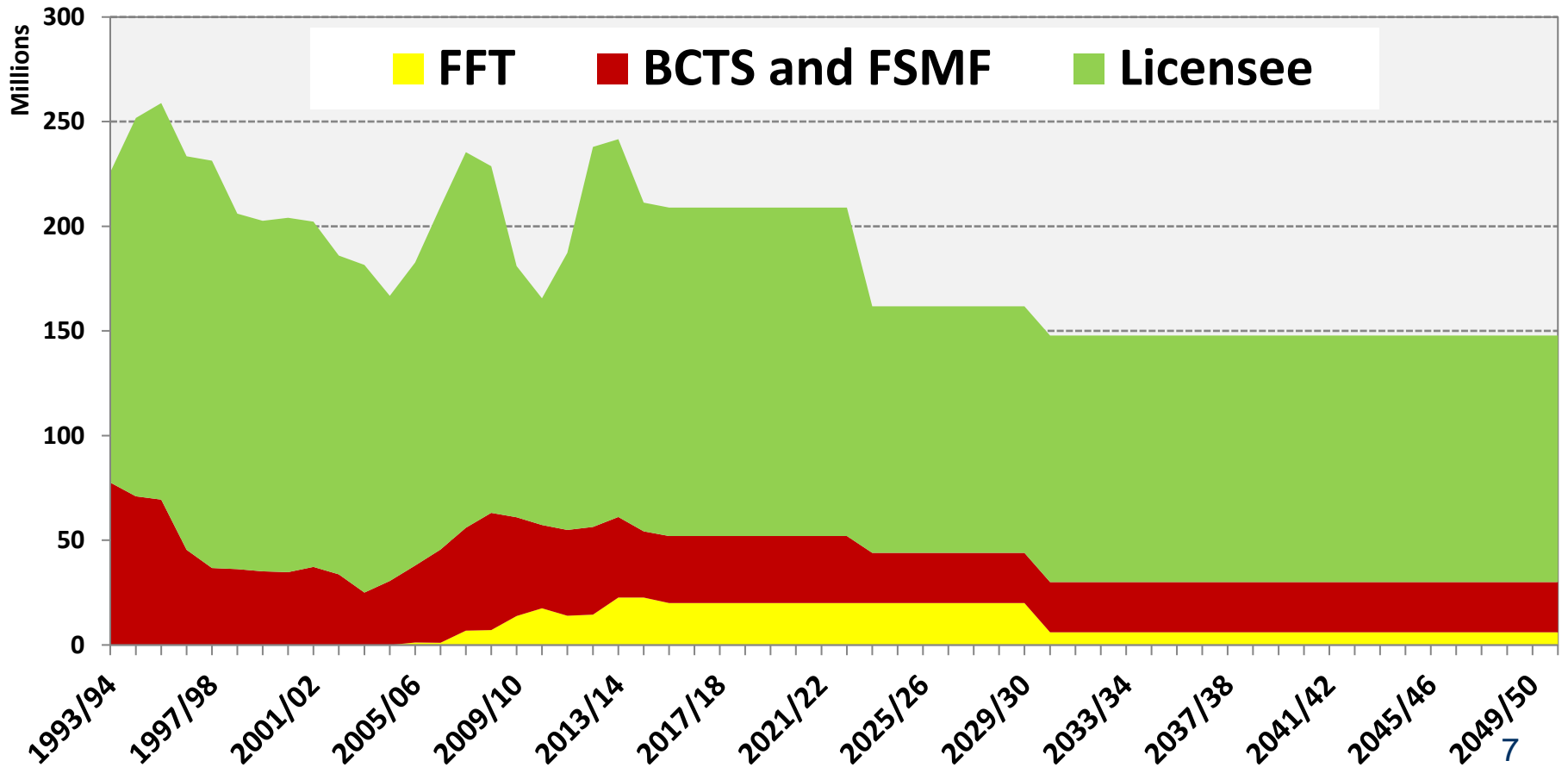
### Projected FFT Impact Forecast Provincial TSAs and TFLs

harvest m3/year





## Seedlings planted by responsibility





Ministry of Forests, Lands  
and Natural Resource Operations

## **Long Term Seedling Projections Prepared By Select Seed, Forest Genetics Council**



## 2019/20 Future Seedling Demand Forecast

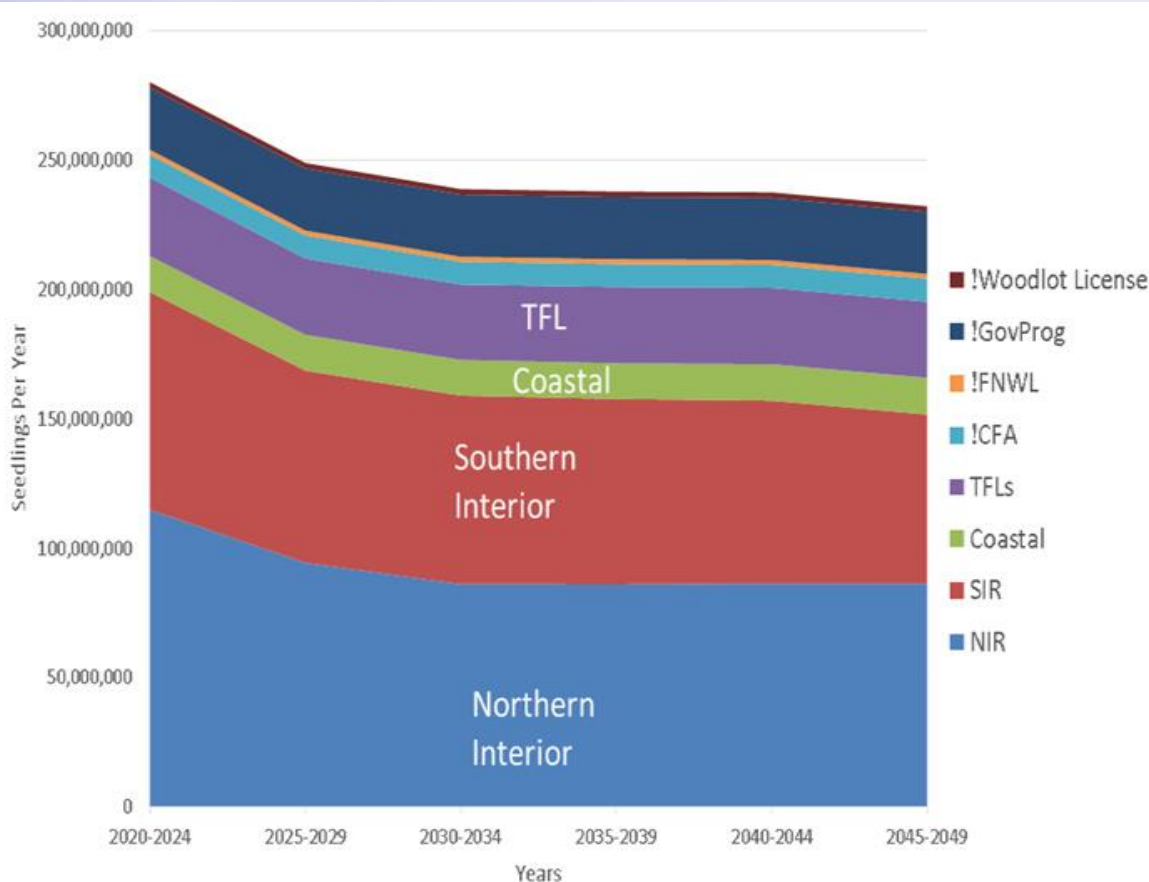
- In 2019/20, the Ministry, Vernon Seed Orchard Co., and SelectSeed with Forsite Consulting, undertook a project to estimate annual seedling demands in BC by species, management unit and BEC variant to 2049.
- The purpose of the project was to estimate seedling needs using Climate-based seed transfer standards and to guide long term investments in seed orchards.
- Provincial demand is forecast to drop from 308M seedlings in 2019 to 231M by 2049.
- Seedling needs for gov't programs (FFT, Forest Carbon), which have been over 60M seedlings /yr, were capped at 24M/yr over the 30-year period due to the uncertainty of future public funding , and inability to predict areas needing treatment outside licensee and BCTS obligation areas beyond 3-5 years.



# Seedling Projections 2020 to 2049

Source :

Brian Barber: Select Seed ,Forest Genetics Council



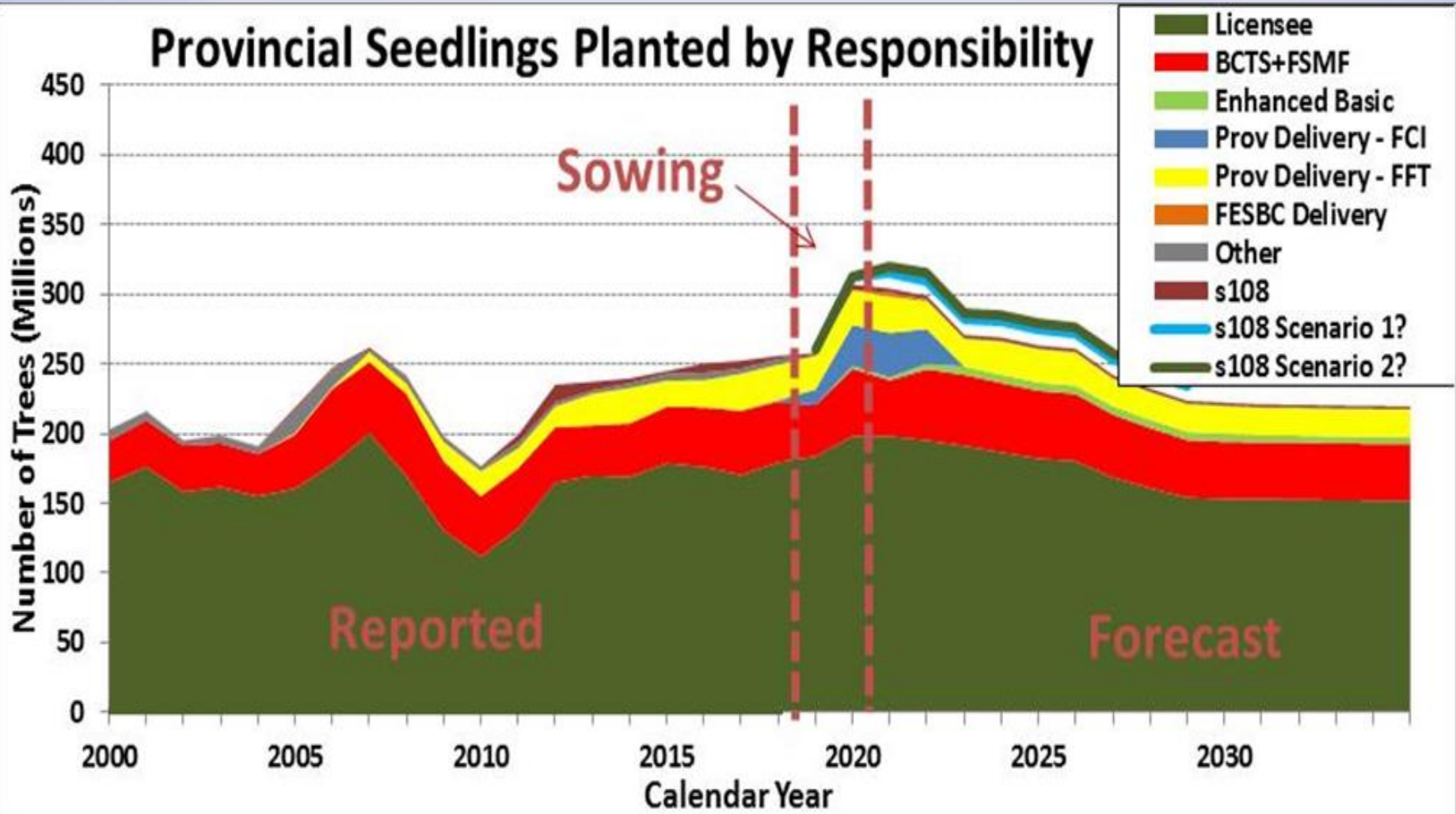
2019 Sowing Request	308,084,400
2020 / 2024 Sowing Projection	280,121,524
2045 / 2049 Sowing Projection	231,665,305

## Short term predictions 2020 and beyond





## Provincial Seedlings Planted by Responsibility





## 2020 Seedling Planting Totals by Funding Source and Season

Funding Source / Season	Spring	Summer	Fall	Winter	2020 Total
BC Timber Sales	35,100.4	10,742.1	1,644.4		47,486.9
Government (FFT & FCI)	47,763.8	1,316.4	3,690.5		52,770.7
Licensees	162,875.3	37,480.2	5,087.5	24.0	205,467.0
Other	5,201.7	138.0	12.0		5,351.7
<b>Grand Totals</b>	<b>250,941.2</b>	<b>49,676.7</b>	<b>10,434.4</b>	<b>24.0</b>	<b>311,076.3</b>



## 2020 Seedling Planting Totals by Funding Source/Season ( Interior vs the Coast)

Funding Source / Season	Spring	Summer	Fall	Winter	2020 Total
BC Timber Sales	32,244.5	10,742.1	321.1	0.0	43,307.7
Government (FFT & FCI)	47,632.5	1,316.4	2,812.8	0.0	51,761.7
Licensees	146,736.6	36,205.0	2,676.9	0.0	185,618.5
Other	4,851.7	138.0	7.0	0.0	4,996.7
<b>Grand Totals</b>	<b>231,465.3</b>	<b>48,401.5</b>	<b>5,817.8</b>	<b>0.0</b>	<b>285,684.6</b>

### Coast

Funding Source / Season	Spring	Summer	Fall	Winter	2020 Total
BC Timber Sales	2,855.9		1,323.3		4,179.2
Government (FFT&FCI)	350.0		877.7		1,227.7
Licensees	16,138.7	1,275.2	2,410.6	24.0	19,824.5
Other	131.3		5.0		136.3
<b>Grand Totals</b>	<b>19,475.9</b>	<b>1,275.2</b>	<b>4,616.6</b>	<b>24.0</b>	<b>25,391.7</b>
<b>Grand Totals Coast &amp; Interior</b>	<b>250,941.2</b>	<b>49,676.7</b>	<b>10,434.4</b>	<b>24.0</b>	<b>311,076.3<sup>14</sup></b>

## 2021 Seedling Planting Totals by Funding Source and Season

Funding Source / Season	Spring	Summer	Fall	Winter	2021 Total
BC Timber Sales	32,144.5	3,175.6			35,320.1
Government (FFT & FCI)	59,817.3				59,817.3
Licensees	140,211.6	12,690.0	200.0		153,101.6
Other	3,768.1				3,768.1
<b>Grand Totals</b>	<b>235,941.5</b>	<b>15,865.6</b>	<b>200.0</b>	<b>0.00</b>	<b>252,007.1</b>
From 2021 Sowing Estimate		40,000.00	4,000.00		44,000.00
<b>Totals with 2021 Sowing Estimate</b>	<b>235,941.5</b>	<b>55,865.60</b>	<b>4,200.00</b>	<b>0.00</b>	<b>296,007.10</b>

## 2021 Seedling Planting Totals by Funding Source/Season ( Interior vs the Coast)

### Interior

Funding Source / Season	Spring	Summer	Fall	Winter	2021 Total
BC Timber Sales	30,361.8	3,175.6			33,537.4
Government (FFT & FCI)	59,817.3				59,817.3
Licensees	128,671.6	12,690.0			141,361.6
Other	3,768.1		200.0		3,968.1
<b>Grand Totals</b>	<b>222,618.8</b>	<b>15,865.6</b>	<b>200.0</b>	<b>0.0</b>	<b>238,684.4</b>

### Coast

Funding Source / Season	Spring	Summer	Fall	Winter	2021 Total
BC Timber Sales	1,782.7				1,782.7
Government (FFT & FCI)					0.0
Licensees	11,540.0				11,540.0
Other					0.0
<b>Grand Totals</b>	<b>13,322.7</b>	<b>0.0</b>	<b>0.0</b>	<b>0.0</b>	<b>13,322.7</b>



***Actual & Projected Planting Levels : 2020 to 2025  
(Industry and Ministry supplied data)***

<b>Year</b>	<b>2020 planted</b>	<b>2021</b>	<b>2022</b>	<b>2023</b>	<b>2024</b>	<b>2025</b>
<b>Grand Totals</b>	<b>308,118.1</b>	<b>295,853</b>	<b>296,137</b>	<b>273,221.4</b>	<b>269,557</b>	<b>265,562</b>

## Government Programs- What's in the Future ?

- **FRPA Section 108**
- **Enhanced Basic**
- **Economic Recovery Stimulus Program**

Government announced in April a new Economic Recovery Task Force to bring together leaders from business, labour, First Nations and not-for-profits to help ensure the Province's economic response to COVID-19 is effective and responsive to the needs of British Columbians. The economic recovery funding is 1.5 billion dollars. Government has been receiving proposals externally and from within government and is over-subscribed.
- **2 Billion Tree Federal Program**
- **Other**

### Seedlings planted (in millions) by responsibility and year

Calendar Year	Licensee	BCTS + FSMF	Enhanced Basic	Provincial Delivery		FESBC Delivery	s108	Other	Total
				FCI	FFT				
2016	176	43	0	0	20	0	6	5	250
2017	171	46	0	0	26	0	6	4	252
2018	180	43	0	1	25	0	2	4	256
2019	184	37	0	11	24	0	2	0	258
2020	197	48	2	29	25	0	4	0	307
2021	197	40	2	32	25	3	3	0	302
2022	194	51	4	20-25?	20	1	2	0	297
2023	190	51	6	0	20	0	2	0	269